

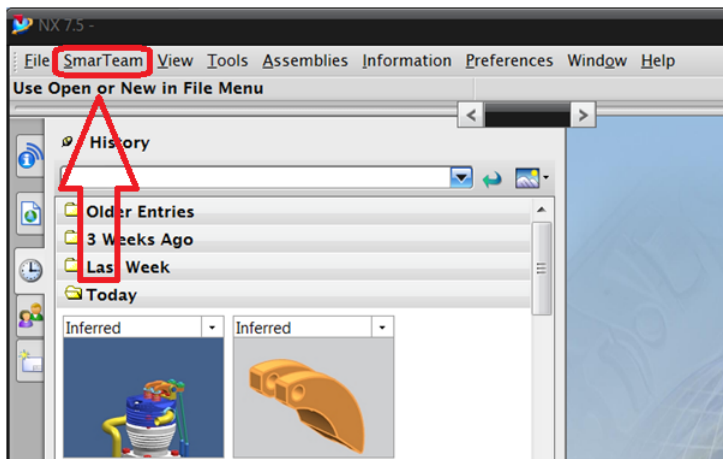
# NXST User Guide in a Nutshell

---

This document is a compact user guide to the NX integration of ENOVIA SmarTeam ("NXST"). It does not provide an introduction to ENOVIA SmarTeam itself. Before using this guide you need a basic understanding of ENOVIA SmarTeam Editor, including document structures and document life cycles.

## Before you begin

Please make sure that the SmarTeam integration menu is accessible in the NX menu bar as displayed in the screenshot. This documentation does NOT cover installation and administration of NXST. This is part of the admin documentation.

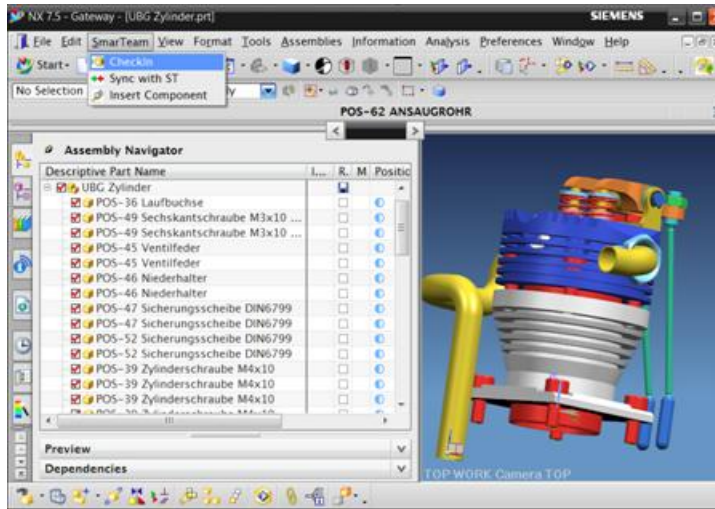


## Saving NX data into ENOVIA SmarTeam

1. Start NX and open a part or an assembly.
2. Open integration menu "SmarTeam > CheckIn" and log in to SmarTeam.
3. In NXST window, open "Tools-> Licensing -> Get license".
4. Click the "ProjectChooser" button and select SmarTeam project and folder.
5. Click the "CheckIn" button to start the check in process.

## Connecting to ENOVIA SmarTeam


In the SmarTeam integration menu, choose “CheckIn”.

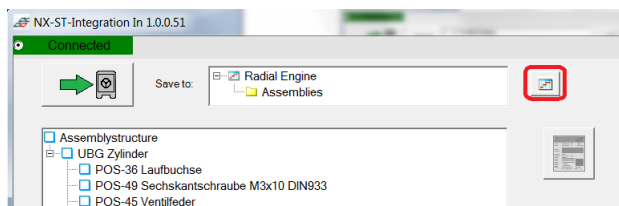


If there is no active connection to ENOVIA SmarTeam, you are prompted to log on to the database. Fill in user name and password and click “OK”.

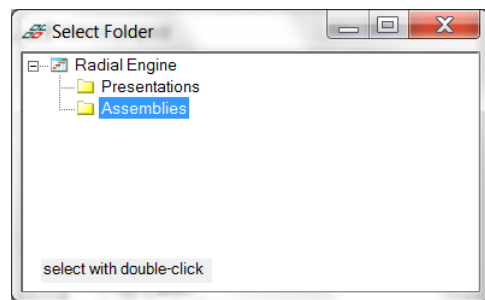
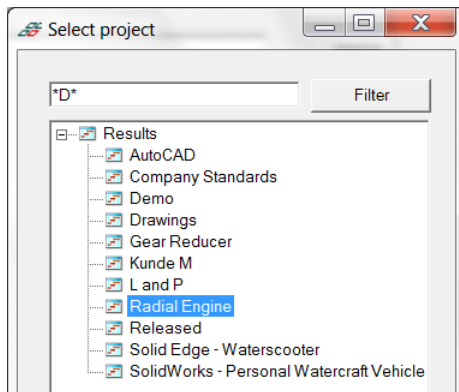
The NX assembly structure is displayed in the NXST window. Note the icons next to the NX part names: the empty sheet symbol means that they are all new to SmarTeam (not yet in the database).

## Selecting ENOVIA SmarTeam Project and Folder

Before saving data to SmarTeam you have to select the corresponding project in the database. Click the button  to open the project chooser.

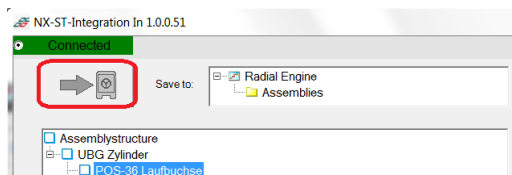


Double click a project name to select it. NXST displays the folders contained in this project. Double click to select the desired folder.



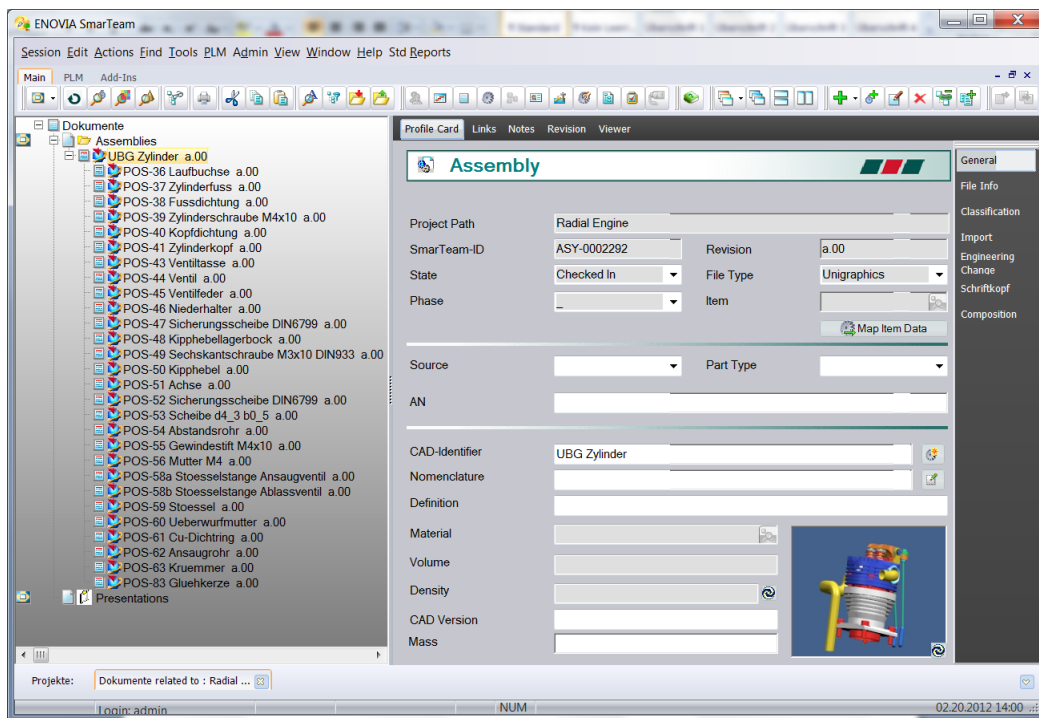
## Checking NX data into ENOVIA SmarTeam

Use the “CheckIn” button to start the check in process. Wait for the viewing files to be created and the documents being saved to ENOVIA SmarTeam.



## Displaying NX data in ENOVIA SmarTeam

Browse the SmarTeam project folder containing the NX data. The assembly structure is displayed.



## NX Data Change Management

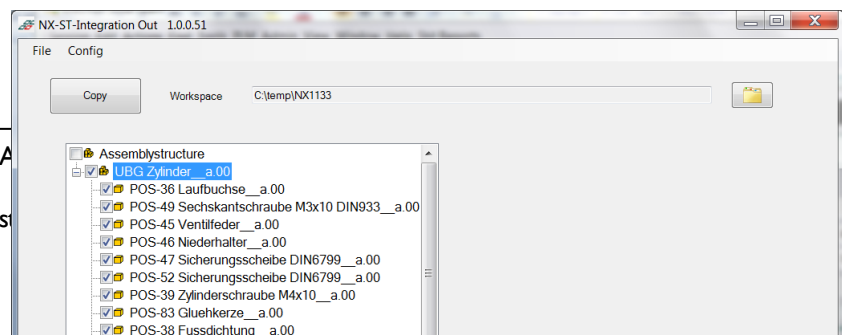
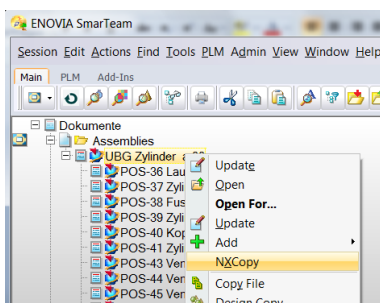
It is important to understand how NXST handles modified documents, locks objects and creates new revisions in SmarTeam. The mechanisms are comparable to ENOVIA V6 and differ from CATIA V5 integration.

In order to modify an NX assembly, part or drawing, do the following:

- Use "NX Copy" in ENOVIA SmarTeam and open the NX files from your local workspace.
- Perform your modifications in NX.
- Save your modified files, using the standard NX function "Save".
- Lock documents in NXST to prevent other users from modifying them.
- Use the NXST function "CheckIn" to save your modifications to ENOVIA SmarTeam.
- New revisions of the modified documents are created during check in.

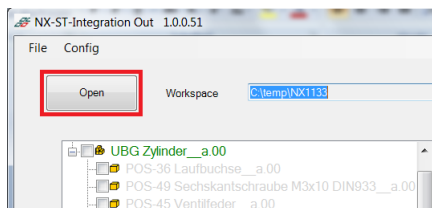
## Loading NX data from SmarTeam

A special menu item "NX Copy" has been implemented to load NX data from ENOVIA SmarTeam and eventually change them in NX. Do NOT use the standard functions "Open ..." or "Open for ..."! Depending on the data model the administrator can implement the correct function for each use case. Please refer to the installation documentation.



Use the ENOVIA SmarTeam context menu function “NX Copy” to load data into your NX session. The function allows for selecting a workspace folder where the files are copied and loaded. Lock the documents that you intend to modify using the context menu “Lock”. You can change or extend your selection later in the NXST CheckIn Manager.

Select the “Copy” button to start the process.



Select “Open” to load the copied assembly, part or drawing in NX.

## Modifying NX data

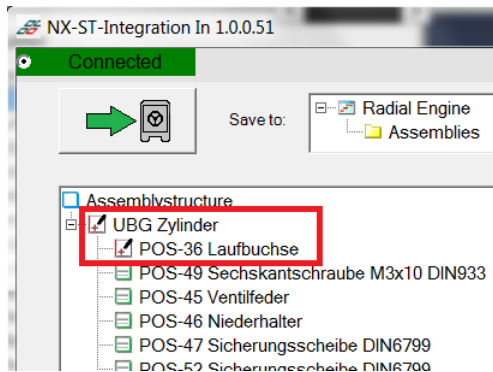
Use NX standard functions to modify the data loaded in your NX session. As long as you are connected to ENOVIA SmarTeam, the integration detects which files have been modified. When you have finished your changes, use the NX save function to save the files you modified.

**Important Notice: NXST does not automatically save your documents before check in. You MUST save your modified files first by using the standard NX function.**

## Checking in NX Data

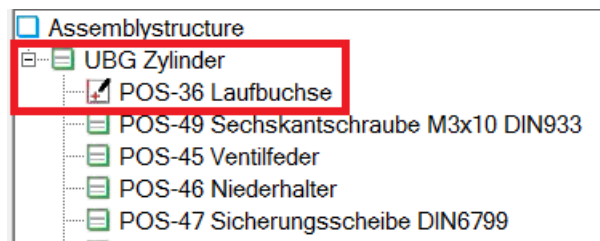
To save your modifications to the ENOVIA SmarTeam database, select NXST “SmarTeam => CheckIn”. The integration window displays the data structure and the current SmarTeam status. Documents changed during the NX session are shown with a different icon (see screenshot below). Click the top


left button to perform the check in operation. NXST creates new revisions in ENOVIA SmarTeam for all modified documents. No user interaction is necessary.



### Revision management of NX data

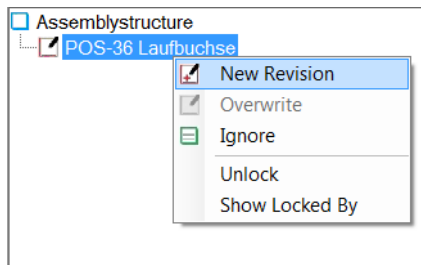
Having modified your NX parts you may check them in to ENOVIA SmarTeam without creating a new version of the assembly. This is useful when several designers work on different parts of the same assembly.



When you start an NX session, there may be documents in state  “modified”. When you check in these documents, no new revisions are created in SmarTeam – this was already done after the first modification and is not necessary a second time.

### Quick CheckIn (“New Revision”)

If you want to save two subsequent versions of a document, you normally have to perform a SmarTeam check in, use NXCopy to load and modify the document and check in the new version. To shorten this, just use “New Revision” in the NXST context menu. The older version of your document is maintained in the SmarTeam database, your current document is saved with a new revision number when you perform the check in.



## NXST CheckIn Manager: Life Cycle States

	New	Document is new to SmarTeam
	New	Document is new to SmarTeam, will be locked on check in
	Checked In	Document in state "Checked in", not locked
	Checked In	Document in state "Checked in", locked by current user
	Checked In	Document in state "Checked in", locked by different user
	New Revision	New revision of the document will be created on check in
	New Revision	New revision will be created; document locked by current user
	Modified	Modifications will be saved to SmarTeam, but no new revision is created

## Best Practice: Revision Management and Collaborative Design

1. Use NXST to check in your parts and assemblies to ENOVIA SmarTeam.
2. Lock all parts that you are responsible for. This prevents other users from changing them. They can still load them and even change geometry in their NX session, but they are not able to save their changes to SmarTeam.
3. It is a good idea for the responsible designer to lock the NX root assembly. So he can control the creation of new assembly revisions and check their geometry during the change process.
4. Use "NX Copy" in SmarTeam to load and change your NX data. By default, the most recent versions of all documents are opened.
5. Modify your data in NX and use the local "Save" function. If you have to change parts temporarily in your NX session (removing something for better viewing, derive planes ...), just do not save them. NXST subsequently does not save these changes to SmarTeam.
6. Every time you want to save your modifications to SmarTeam, use NXST to check in the whole assembly. Depending on IT backup strategies and impact of modifications this may apply several times a day or just a few times per month.